



Co-funded by  
the European Union

pina



REPUBLIC OF SLOVENIA  
MINISTRY OF EDUCATION  
OFFICE OF THE REPUBLIC  
OF SLOVENIA FOR YOUTH

# CREATORSHIP

*Creative Leadership in Youth Work*

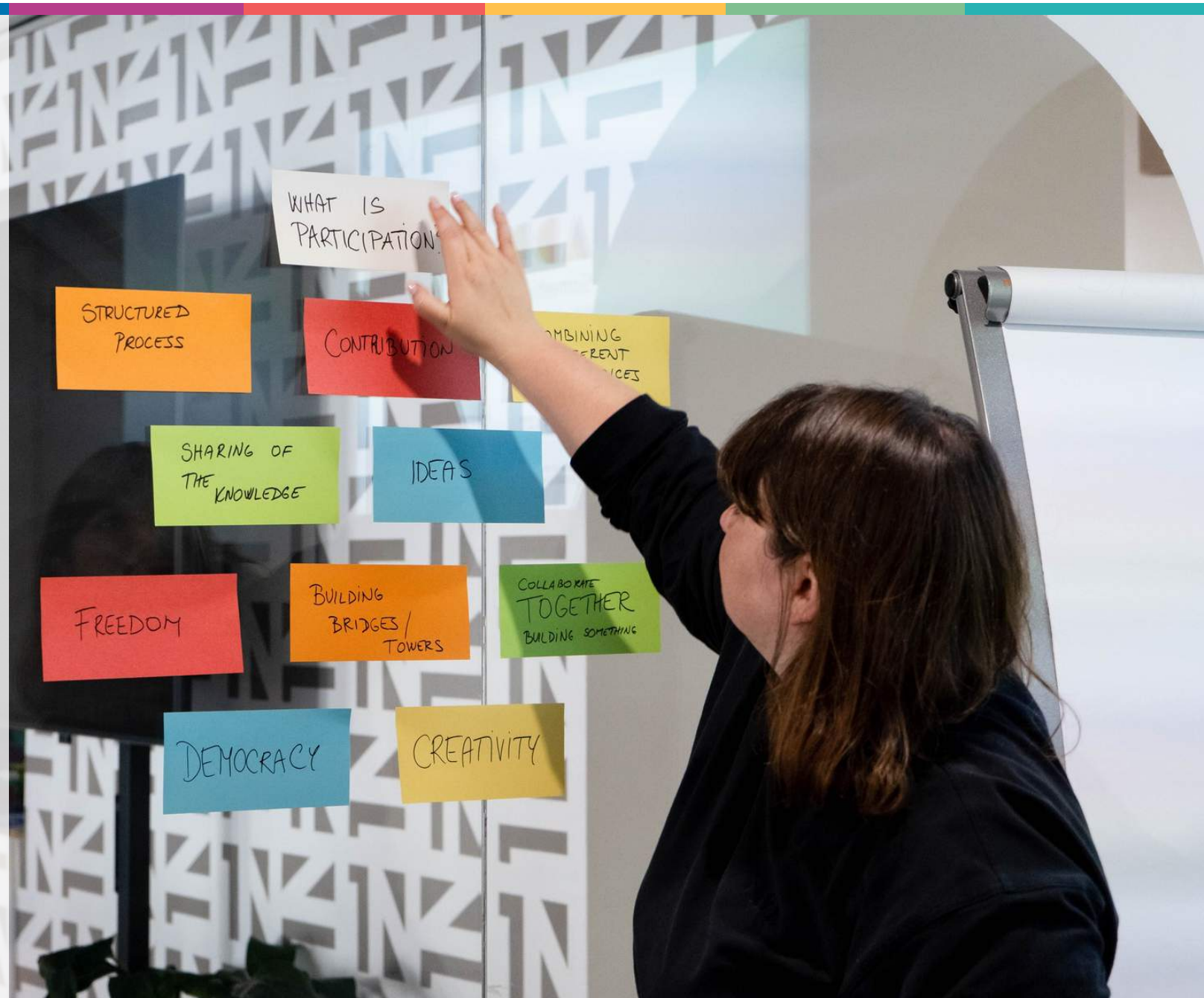
**TRAINING COURSE**

*Brežice, Slovenia 18-22 March 2024*

**INFOKIT**

## DEAR FUTURE PARTICIPANT.

This training course is for you if you want to develop your leadership skills, prepare for new generations of youth, and create an environment that encourages innovation, collaboration, and sustainable success. The training course will be implemented through experiential learning methods that acquire active participation and explorative learning and will bring you concrete results that you can start implementing in your organization.



WHAT IS PARTICIPATION

STRUCTURED PROCESS

CONTRIBUTION

COMBINING DIFFERENT SERVICES

SHARING OF THE KNOWLEDGE

IDEAS

FREEDOM

BUILDING BRIDGES / TOWERS

COLLABORATE TOGETHER BUILDING SOMETHING

DEMOCRACY

CREATIVITY

## WHAT WILL THE TRAINING OFFER YOU? / WHAT CAN YOU GAIN IF YOU JOIN?

### Uncover Your Leadership Potential:

the training will reveal your unique leadership abilities and help you discover how to lead your youth group.

### Innovative Working Methods:

learn the innovative and greatest youth engagement methods that will make your work even more interesting and effective.

### Acquire Useful Tools for Problem-Solving:

the training equips you with concrete solutions to challenges you may face in leading youth activities.

### Bring a more inclusive and creative working culture to your organization:

with acquired knowledge, you'll be able to have an even greater influence on positive changes in the organization you lead. You will also create an action plan to go home with concrete solutions.

### Personal Growth and Development:

the training is not just for your work environment; it's an opportunity for your personal development and growth in a leadership role.

### Network with Like-Minded Individuals:

connect with youth leaders from other countries and build a community of support, idea exchange, and collaboration on projects.





# CREATORSHIP



## ABOUT PINA - THE HOSTING ORGANISATION

PiNA is an association, established in 1998, which has been promoting socially responsible practices and strengthening the culture of dialogue for over 20 years. Since its establishment, PiNA has served as a point for meeting, providing information, exchange, connection and collaboration in the field of societal challenges. In 1998, PiNA was the first internet café in Slovenia, and by 2016, it has operated as a multimedia and youth centre, member of Slovenia's Europe Direct information centres, partner in the Eurodesk Regional Information Point network, a hub for NGOs of the Coastal-Karst Region, and from 2022, a contact point for the program Citizens, equality, rights and values (CERV) and an organisation operating in the public interest in the field of youth, culture and international cooperation development.

PiNA's activities are supported by programmes, such as European territorial cooperation, Erasmus+, Europe for Citizens, European Social Fund and Norwegian Financial Mechanism, and are being developed, some even presented in the association's 240 m<sup>2</sup> premises in the heart of Koper. The premises consist of office space, event facilities, a conference room, a room for meetings, a kitchen and a library.

Learn more at [www.pina.si/en](http://www.pina.si/en).

## TRAINERS OF THE ACTIVITY WILL BE:

### Head of education at PiNA - Maja Drobne

Maja holds a bachelor in Political science and has been working in the youth sector for the past 15 years. She is a member of the Pool of Trainers for the Slovenian national agency of Erasmus+ and an alumni member of the Pool of trainers of the Slovenian National Council. She has been dealing with topics like Inclusion, Global Education, Human Rights, Project Management, Fundraising, and the functioning of NGOs. She is an experienced trainer working for several international organizations such as Plan International, WeMove.eu, and several National Agencies of Erasmus+, such as Finnish, Austrian, Estonian, Bulgarian, Czech and German National Agency. She was a facilitator of the European Youth Conference in Slovenia, the Intercity Youth Conference 2022 and several other international events. Leadership, especially emphatic and creative leadership is one of her passions and bringing it together with Youth work, where she worked for past 15 years.



## Trainer at PiNA - Jasna Ratoša

Jasna holds a bachelor in Cultural Anthropology and is a project manager and trainer at PiNA. She has many years of planning experience, organizing and implementing Erasmus+ international projects and trainings. She is an experienced trainer in the implementation of cultural management programs, participatory processes, active citizenship, work-life balance, gender equality, creative leadership, storytelling, as well as mindfulness, embodiment and flow. She is a coordinator and mentor to volunteers of the ESC program at PiNA and the Koper Youth Center. She advises municipalities and provides professional support in implementing participatory processes. In her work she shares methodologies like LEGO® SERIOUS PLAY®, Nonviolent Communication (NVC), Contact improvisation (CI) and somatic practices. She enjoys the creation of new ways and models to promote cooperation and improvement of communication at the interpersonal and intergroup level. She pays special attention to the research of authentic leadership and methods that are practiced in nature, in the interweaving of movement, mindfulness and creativity.





## ABOUT THE TRAINING COURSE

**DATES: 18-22 MARCH 2024**  
**LOCATION: BREŽICE, SLOVENIA**

**Aim of the training course:** enable participants to innovate, transform organizational cultures, and effectively lead teams in the dynamic landscape of youth work.

### **PARTICIPANTS PROFILE:**

- youth workers,
- representatives of youth organisations,
- experts in youth work, interested in the field of Creative leadership,
- at least 18 years old,
- resident of an EU member state or third country associated with the programme.

**We will accept 22 participants.**

**The official training course language will be English.**



## TIMETABLE

	Sunday	Monday	Tuesday	Wednesday	Thursday	Friday	Saturday
9:30 - 11:00	<b>Arrival day</b>	Getting to know each other and why are we here? What are our learning outcomes (Youthpass)?	Your personal leadership style	Building a positive organizational culture	Approaches to work with different generations	Preparation of an action plan	<b>Departure day</b>
11:00 - 11:30		Coffee break	Coffee break	Coffee break	Coffee break	Coffee break	
11:30 - 13:00		Who am I as a leader?	Creating a »brave space« for young people	How to encourage creativity and innovation in teams	Changing the organizational culture	Next steps	
13:00 - 15:00		Lunch	Lunch	Lunch	Lunch	Lunch	
15:00 - 17:00		Personal values and their importance in leadership	Identifying potentials and interests in people	Sparking active participation of young people (action in local environment)	Free afternoon	Youthpass, evaluation and celebration	
17:00 - 17:30		Reflection	Reflection	Reflection	Reflection	Reflection	
19:00		Dinner	Dinner	Dinner	Dinner	Dinner	

## LEARNING GOALS:

- develop self-reflection of the leader and understanding of his own leadership role,
- form a clear vision of management and development of organizational culture,
- develop creative approaches for working with teams and young people,
- plan action steps to change organizational culture to support creative leadership.



## WHICH COSTS ARE COVERED

- ➔ Accommodation in a hostel
- ➔ Food (3 meals and 2 coffee breaks per day)
- ➔ Reimbursement of the travel costs (the amount will be calculated based on the travel distance of the participant)
- ➔ Each participant is responsible to arrange his/her own health and travel insurance for their stay in Slovenia in addition to the European Health Insurance Card (EHIC)

---

## WHAT ABOUT THE INSURANCE ABROAD?

If you don't already have insurance abroad, we recommend applying for [European Health Insurance Card](#) which is a free card that gives you access to medically necessary, state-provided healthcare during a temporary stay in any of the 27 EU countries (Iceland, Liechtenstein, Norway and Switzerland or the United Kingdom under the same conditions and at the same cost (free in some countries) as people insured in that country). The benefits covered include, for example, benefits provided in conjunction with chronic or existing illnesses as well as in conjunction with pregnancy and childbirth.

## ACCOMODATION

You will be staying in the youth hostel in Brežice, which is not far from Brežice Castle and it's near Slovenia's largest natural health resort. It's also near the second largest Slovenian tourist center Terme Čatež and the pearl confluence of the Krka and Sava rivers.

**Participants will stay in the rooms up to 3 people per room. Rooms will be divided by gender.** Bathrooms and toilets will be shared among all the participants. Beddings will be provided by the hostel.

**Address:** Gubčeva 10a, Brežice, Slovenia.





## USEFUL NUMBERS

**113** Police

**080 1200** Police (anonymous crime reporting)

**112** Emergency Reporting Center (fire and rescue station)

**1188** Information about telephone subscribers in Slovenia

**1180** Information about telephone subscribers in other countries

**1987** Traffic information and roadside assistance (provided by the AMZS, the Automobile Association of Slovenia)

**198 10** Wake up service

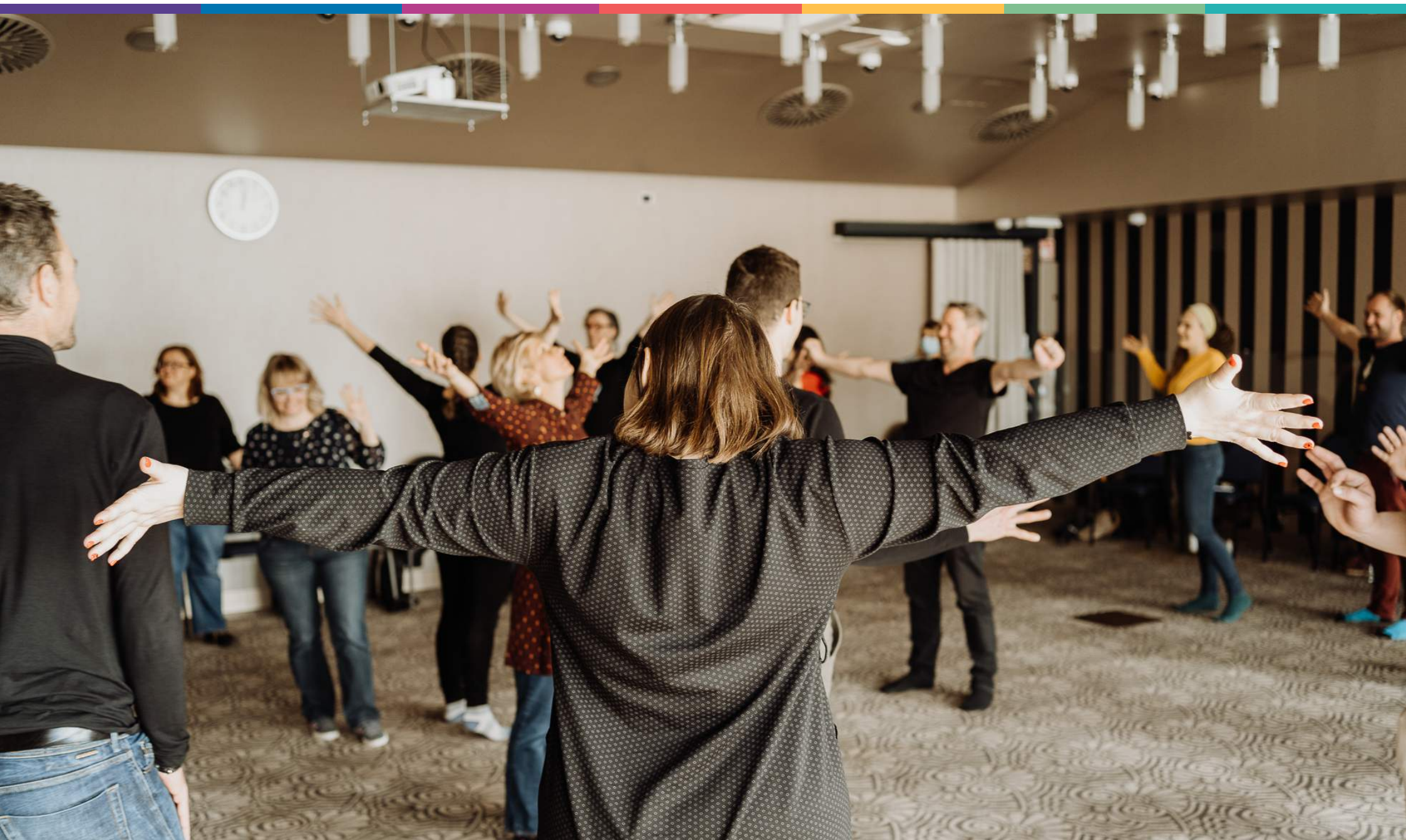
**115** Operator-assisted domestic and international calls



## CONTACT NUMBER:

**Jasna Ratoša:**  
terminal@pina.si or  
jasna.ratosa@pina.si,  
+386 40 357 098

# CREATORSHIP





## ABOUT SLOVENIA

Slovenia is a **green**, **creative** and **innovative** country; it is a full member of the European Union while remaining fully capable of retaining its own identity. Is on the 38th place in Europe regarding the size of the country. You would need around 3 hours of driving to come from wherever you are to wherever you want to go. Our neighbouring countries are Hungary, Croatia, Austria and Italy. Slovenia lies at the intersection of the Alps, the Mediterranean, the Pannonian Plain and the Dinaric Alps. The great diversity of the Slovenian landscape is matched by its well-preserved natural environment; more than half of Slovenia is forested and over one-third of its territory is included in the Natura 2000 network. Slovenians are known as a kind but can be a bit reserved like Alpine people, open like Mediterraneans or good-hearted like Pannonians. Since there are not that many of us, we often joke that in Slovenia everyone knows each other. One of the things we are proud of is our landscape. You can swim in the sea, stand on the peak in the Julian Alps, explore caves, swim in lakes, observe our agricultural areas, get lost in the forests or visit spa centres within one day. \

We are the only country in the world that has love in its name: sLOVEnia. We are a young country (got independent in 1991) with our own language, culture and history.



CAPITAL CITY:  
**LJUBLJANA**

OFFICIAL  
LANGUAGE:  
**SLOVENIAN**

POPULATION:  
**2,061,085**

## TRAVEL

We suggest you use the airport of Zagreb (Franjo Tuđman Airport) or Ljubljana as an option, but you will need to travel from the airport to Brežice by bus or train. Here is another option for traveling with the train from Ljubljana to Brežice.

From the airport in Zagreb the best way to reach Brežice is GoOpti, a low cost shuttle. The ticket has to be booked in advance on their web page; as a release position you have to choose Hostelling International (MC hostel Brežice, Gubčeva ulica 10A, 8250 Brežice, Slovenia).

If you are willing to travel, using transports which are “greener” (not flying), please contact us and we will find some extra funds (if needed), to cover that kind of travel, since the Erasmus+ program is making that possible.

Reimbursement of the travel costs will only be done upon the full attendance in the Erasmus+ activity and presentation of original tickets with boarding passes and receipt/invoices. You will have to send us the original tickets and boarding passes proving your trip back home from Slovenia to your country. We will be able to reimburse you after we will receive all the documents (invoices and boarding passes).



## APPLICATION DEADLINE



**FILL IN THE ONLINE APPLICATION FORM AT  
THE LATEST BY THE 22ND OF JANUARY 2024.**

THE TRAINING COURSE IS SUPPORTED BY THE ERASMUS+ PROGRAM, WITHIN  
THE ACTION MOBILITY PROJECTS FOR YOUTH WORKERS.

---

**IF YOU HAVE ANY ADDITIONAL QUESTIONS YOU CAN CONTACT  
TERMINAL@PINA.SI.**